

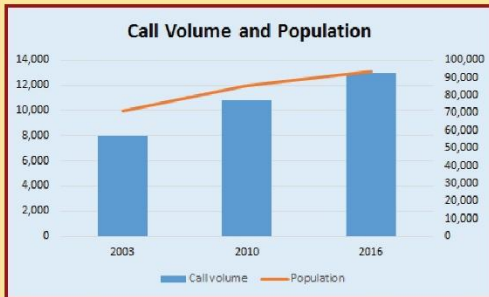


Capital Facilities & Equipment Plan

2017-2021

Fast Facts

- ◆ Lacey Fire District 3 (LFD3) responds to an average of 35 - 40 incidents daily.
- ◆ In 2016, the District responded to almost 13,000 calls for assistance.
- ◆ Since 2003, the LFD3 service area has grown in population by 32% as have the number of response incidents.



- ◆ Capital investments were last made to build new District facilities 14 years ago.
- ◆ To maintain pace with the increase in response incidents and population growth, LFD3 has developed a Capital Facilities and Equipment Plan to guide the next phase of District growth and infrastructure.

What this means for citizens of LFD3...

Funding will require voter approval.

For the average \$260,000 home, the anticipated bond payment increase would be less than \$1 a month for the first 3 years while existing bonds are paid off.

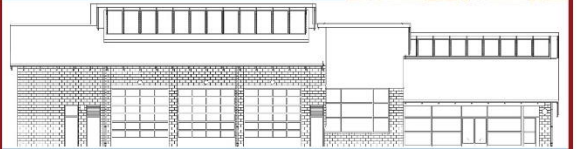
The bond rate will then decrease about 50 cents a month for the average home for the remainder of the new bonds.

For more detailed information visit www.laceyfire.com

PROPOSED PLAN INCLUDES

New Steilacoom Road Station—Repurpose Old

The current station provides very little privacy for crew members working twenty-four hour shifts and is the only one of our facilities that has a "common dorm" design.



The new station will house the engine company and paramedic unit currently responding from the adjacent facility and will allow for the future addition of resources as responses in this area continue to increase. The old station will be able to provide much needed classroom space for the delivery of many District and regional training programs.

Station Expansion - 6500 Mullen Road S.E.



The addition of two dorm rooms for crew and one additional apparatus bay to meet the increasing demands of its service area.

Vehicle Repair Facility Expansion

Expansion of the Vehicle Repair Facility would provide adequate space for regional fleet maintenance.



Apparatus Procurement



Fleet upgrade and acquisition in accordance with industry standards of 20 year life service of vehicles.

15 years front line service
5 years as reserve

Equipment Upgrades

Current Self-Contained Breathing Apparatus (SCBA) equipment required for use in fire and hazardous responses does not meet latest industry safety standards.

